

## Full Zip Heavyweight Hooded Sweatshirt

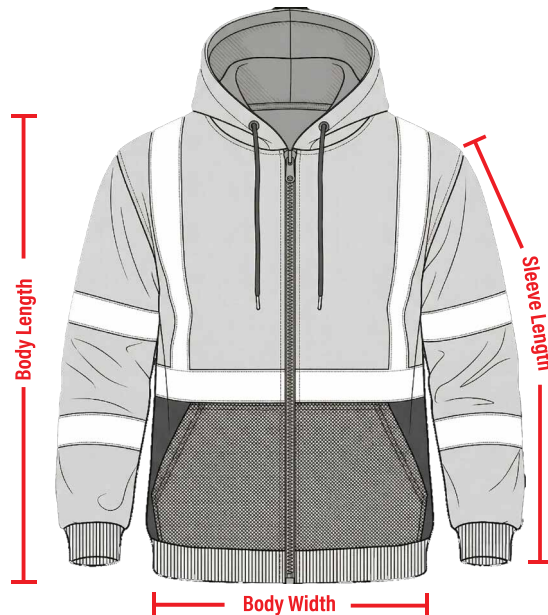
This hoodie is built for those who need to be seen without sacrificing comfort or a bit of style. The FS340 Full Zip Hoodie blends high-visibility safety with a practical "black-bottom" design to keep you looking sharp even on the grittiest job sites.



### Features

- ANSI/ISEA 107-2015 Class 2 & Class 3 Standards
- 100% polyester heavyweight fleece
- 2" Reflective stripes front, back & sleeves
- Rib knit cuffs and waistband
- Front lower hand warmer pocket
- Available in sizes S - 7XL, LT-6XLT

GARMENT DIMENSIONS (inches)			
Tall sizes available for L - 6XL. Add 2" to Body & Sleeve Lengths			
Size	Body Width	Body Length	Sleeve Length
S	24.02	28.74	26.38
M	25.2	29.13	26.77
L	26.38	29.53	27.17
XL	27.56	29.92	27.56
2XL	28.74	30.31	27.95
3XL	29.92	30.71	28.35
4XL	31.1	31.1	28.74
5XL	32.28	31.5	29.13
6XL	33.46	31.89	29.53
7XL	34.65	32.28	29.92



SCREEN PRINT SIZES				
Size	L/R Chest	Front Full Chest	L/R Upper Sleeve	Full Back
S	3.5"	6"W x 7"H	3.5"	8"
M	3.5"	6"W x 7"H	3.5"	9"
L	3.5"	6"W x 7"H	3.5"	11"
XL	3.5"	6"W x 7"H	3.5"	11"
2XL	3.5"	6"W x 7"H	3.5"	12"
3XL	3.5"	6"W x 7"H	3.5"	12"
4XL	3.5"	6"W x 7"H	3.5"	12"
5XL	3.5"	6"W x 7"H	3.5"	12"
6XL	3.5"	6"W x 7"H	3.5"	12"
7XL	3.5"	6"W x 7"H	3.5"	12"