

Class 3 Water Resistant Rain Jacket

Features

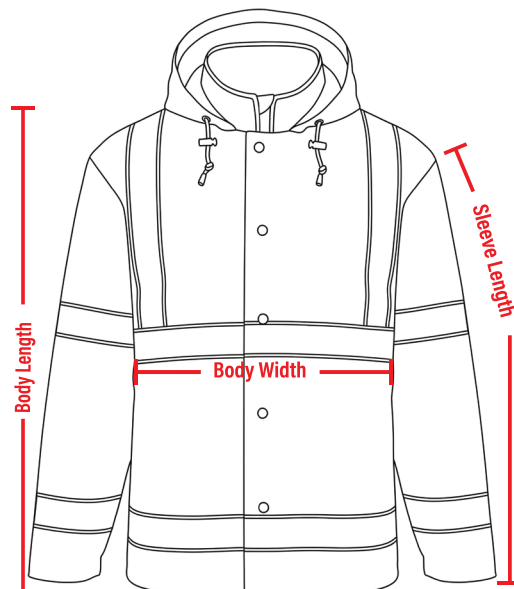
- ANSI/ISEA Class 2 & Class 3 Standards
- Water resistant
- 2 pockets for storage
- 100% polyester fabric with water resistant coating
- Hood has adjusters on both sides of the drawstring
- Wind resistant to protect against wind chill
- Available in sizes S - 7XL, LT-6XL



Care Instructions:

- Wash warm up to 25x
- Tumble dry low
- Do not bleach
- Do not iron
- Do not dry clean
- Store in cool, dry location out of direct sunlight

GARMENT DIMENSIONS			
Tall sizes available for L - 6XL. Add 2" to Body Length & Sleeve Length			
Size	Body Width	Body Height	Sleeve Length
S	24.41	27.95	25.2
M	25.98	28.35	25.59
L	27.56	28.35	25.98
XL	29.13	28.74	26.38
2XL	30.71	28.74	26.77
3XL	32.28	29.53	27.17
4XL	33.86	29.53	27.56
5XL	35.43	30.31	27.95
6XL	37.01	31.1	28.35
7XL	38.58	31.88	28.74



SCREEN PRINT SIZES (one color only)				
Size	Front L/R Chest	Front Full Chest	L/R Sleeve	Full Back
S	3.5"	N/A	3.5"	10"
M	3.5"	N/A	3.5"	10"
L	3.5"	N/A	3.5"	10"
XL	3.5"	N/A	3.5"	10"
2XL	3.5"	N/A	3.5"	12"
3XL	3.5"	N/A	3.5"	12"
4XL	3.5"	N/A	3.5"	12"
5XL	3.5"	N/A	3.5"	12"
6XL	3.5"	N/A	3.5"	12"
7XL	3.5"	N/A	3.5"	12"